



SENSA

collection 2026

OUR HISTORY

Our Sensa story starts with Intersens Bikes & Parts BV. A family owned company located in the beautiful east of Holland. Here we have been building and developing high-quality sportive bikes for over 30 years.

Intersens has its roots in trading and developing different types of goods. After having originated in America during the 80's the first mountain bikes appeared in Holland. As a former amateur road cyclist Pieter Stiggelbout, founder of Intersens, noticed the potential. He traveled to Asia to purchase the first mountain bikes. In a time without e-mail or internet that was a huge challenge but in 1991 our first mountain bikes were imported. They were not branded Sensa yet though.

For us everything came together in 2005. This was the time to make our next move and express our personal passion for cycling and it's material with the launch of the Sensa brand! At first a small range of custom built and high quality road racing bikes was offered. In the years that followed our line-up grew. We developed custom built mountain bikes and trekking bikes to complement our race bike line-up. Using techniques we also used for our road race bikes. Our company and products keep evolving through innovation up to this day.

Making excellent sportive bikes for excellent prices. So everybody can enjoy cycling!

HANDBUILT IN HOLLAND

Our company and products keep evolving through innovation up to this day. **From our first bike in 2005 till now all our bikes are built in Holland by the best mechanics. For example if you order a custom bike, this will be built by one mechanic!**

JOOP'S DREAM

It's not the latest sportive bike people buy that matters most. It's the first!

That first bike is the start of a richer life. To be more fit, more energetic, simply better than before. That bike gives you freedom to go anywhere you want with just your own power. Bikes are so versatile. Riding it never gets boring. There are always new routes to ride, new goals to reach. Whether you train hard in the hope of becoming a cycling professional or make a small ride just to enjoy the outdoors. The bike stands for freedom, every time you get on it! That's why we also put effort in our entry-level models and not just the high-end custom bikes. Because it is that first bike that can really spark the cycling-virus!

When I was young I already felt the need to change things on my bikes. To make it more "me". Combining stock components in a different way or adapting colors. The thrill of creating something new. Being young I was already asked about what colors I liked to see on next years new bikes. Growing up I got the chance to make this into my daily job. It still is very exciting to create a new frame, a component or color scheme. We know many riders share this passion for their bike. So we want to give them an experience in creating a truly personal custom bike.

„My dream is to see everybody enjoy riding the Sensa of their dreams.“

Joop Stiggelbout
managing director

*Making excellent sportive bikes for excellent prices.
So everybody can enjoy cycling!*

Index

Road Custom



4

Road Special



18

Road



20

Gravel



26

Mountain



33

Trekking



38

E-Bike



46

Supra



50



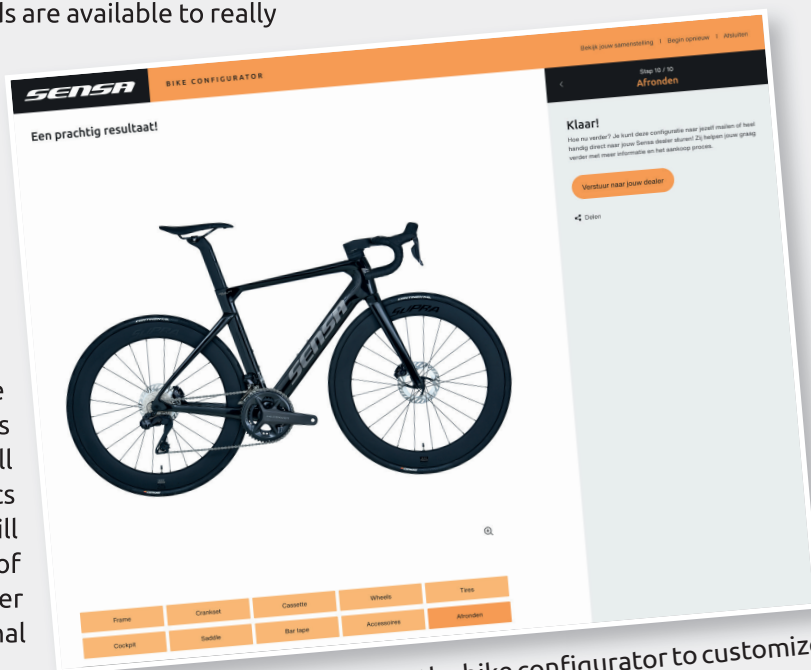


CUSTOM BUILT YOUR BIKE!

Our unique custom program gives you the opportunity to customize the bike to your preference. Because you are unique, the bike has to be unique! Multiple options from the best brands are available to really customize your new Sensa!

You start your custom journey at your Sensa dealer or on our bike configurator at our website! Are you going for the Giulia Supremo, Giulia GF or Giulia Evo Integrale? Everything is possible! After this step you can choose between the best groupsets, wheelsets, handlebars, tires and many more! You can find all the options on page 17!

After you customized your unique new bike we receive your configuration in our headquarters in the Netherlands. The warehouse will collect all the parts for one of our most skilled mechanics who only builds custom bikes. One of them will mount everything from beginning till the end of the process! After sending it to your Sensa dealer you are ready to ride and break all your personal records!



See page 17 or our website for the bike configurator to customize your new dream build.

SENSA KANJERS VOOR KANJERS CYCLING TEAM

Did you know we are the proud main-sponsor of the Sensa Kanjers voor Kanjers Cycling Team. This team plays a big role in the development of young talents with multiple national titles and riders who are now riding in the Pro peloton. It's possible to customize your new bike like they did with the Giulia Supremo!



GIULIA SUPREMO

FASTER LIGHTER BETTER | SENSA GIULIA SUPREMO

It was our dream to create a bike that was faster, lighter and more comfortable than the Giulia Evo Integrale. Using the latest CFD-technology we found improvements on the Giulia Evo Integrale and optimized each tube section. Lessons learned from the Giulia GF were applied to make the bike lighter and more comfortable.

We were able to improve drag reduction* by 9.1 %. Giving you an advantage of 1,5% watt saving*. Comfort* was improved by 30%. Finally the weight dropped by 278 gram on the frame-kit (including seatpost, axles, dropouts etc). Numbers are nice, but the confirmation the testrides gave us was even better.

We present you our best roadbike ever

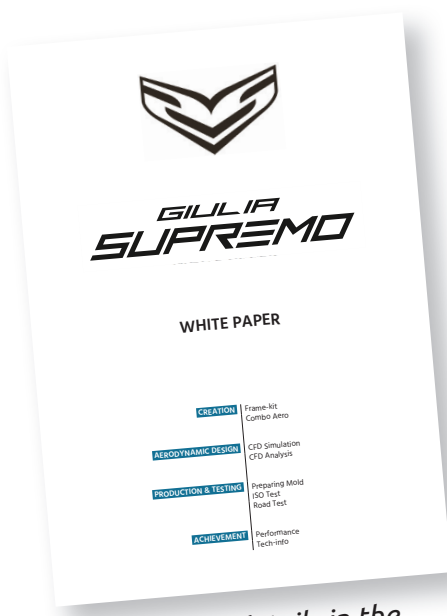
GIULIA SUPREMO, YOUR DREAMBIKE.

You are unique! And your bike should reflect that. So every custom Sensa is built to order specially for you by one of our mechanics. Our finest road bikes are offered as custom bikes with many different groupsets to choose from. Multiple options are available to really customize your new Sensa.

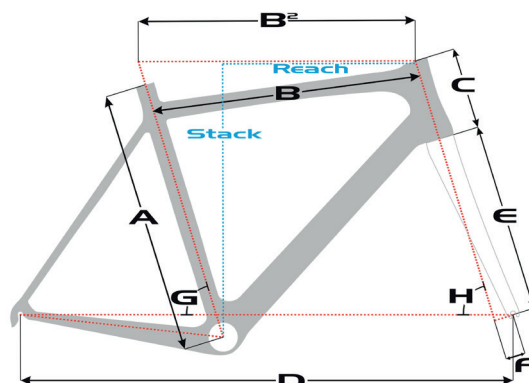
LIMITED

Want to stand out from the crowd? We offer the Giulia GF in a special "Limited" color scheme. This color scheme is painted in limited numbers only, to make your already unique custom bike extra special.

Frame Generation 5 Full Carbon – EPS Moulding – CFD Optimized \ \ **Fork** Supra Full Carbon Monocoque – AIRflow 2 \ \ **Seatpost** Supra Race Line Carbon – Evo – 15mm offset



*Read all the details in the White Paper on the website.





Giulia Supremo

Size	A	B2	C	D	E	F	G	H	Reach	Stack
50cm	467mm	523mm	112mm	976mm	375mm	45mm	74,5°	72,0°	379mm	520mm
53cm	500mm	542mm	140mm	982mm	375mm	45mm	74,0°	73,0°	384mm	550mm
55cm	522mm	559mm	161mm	994mm	375mm	45mm	73,5°	73,0°	390mm	570mm
58cm	541mm	575mm	181mm	1005mm	375mm	45mm	73,0°	73,0°	395mm	590mm
61cm	564mm	591mm	201mm	1012mm	375mm	45mm	72,7°	73,5°	401mm	610mm

Giulia Supremo

Dark Brush



Photo * is with Full Ultegra 2x12 Di2 Groupset and options: Supra RFC Premium 62 Speed Full Carbon, Continental GP 5000 28 mm Full Black, Supra Combo Aero – Weight * 7,8KG (frame 1025g & fork 335g)

Giulia Supremo

*Deep Red Shade
Limited*



Photo * is with Full Dura Ace 2x12 Di2 Groupset and options: Supra RFC Premium 62 Speed Full Carbon, Continental GP 5000 28 mm Full Black, Supra Combo Aero – Weight * 7,5KG (frame 1025g & fork 335g)

Giulia Supremo
Prism Teal
Limited



Photo * is with Full Dura Ace 2x12 Di2 Groupset and options: Supra RFC Premium 62 Speed Full Carbon, Continental GP 5000 28 mm Full Black, Supra Combo Aero – Weight * 7,5KG (frame 1025g & fork 335g)

Giulia Supremo
Mineral Grey
Limited



Photo * is with Full 105 2x12 Di2 Groupset and options: Supra RFC Premium 50 Wide Full Carbon, Schwalbe Pro One Super Race Transparent Brown 28mm, Supra Combo Aero – Weight * 8KG (frame 1025g & fork 335g)

GIULIA GF

THE ULTIMATE ALL-ROUNDER | SENSА GIULIA GF

Only 2 letters, **G** and **F**, but unlimited possibilities. This **Generation Four** of the original Giulia is still true to the initial idea of helping you realizing “gold” in your favorite **Grand Fondo**. But it does so much more. We designed it to be flexible in use. So you can run up to 32mm of rubber and have **Great Fun** on a gravel road, a cobblestone adventure or any road you would normally avoid. Find new routes and stay motivated through the winter to reach peak performance for your big goals in the summer. The newly designed rear triangle makes it our most comfortable road bike ever, so you will finish whatever you come up with, with a big smile. Of course the headtube and BB-stiffness boxed is ticked as always. We took the Aero-tubing profile of the Giulia Evo and improved on that. With EPS Moulding Techniques we create internal surfaces as smooth as the exterior, thus using less material to keep the weight low. Finally all the cables run into the headtube (except mechanical shifting), creating an ultra-clean look. The GF can be run with the Supra Combo Integrale or any regular stem. You decide! The complete overhaul of the geometry takes into account the bigger tires and makes it suitable for comfortable riding up to racing. In the end this is still a bike to **Go Fast** on!

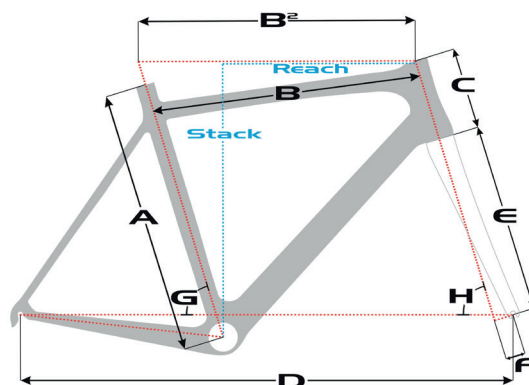
Frame Generation 5 Full Carbon – EPS Moulding
Fork Supra Full Carbon Monocoque - AIRflow \\
Seatpost Supra Race Line GF Carbon – 27.2x370

GIULIA GF, A TRUE RACER WHICH YOU WILL LOVE.

You are unique! And your bike should reflect that. So every custom Sensa is built to order specially for you by one of our mechanics. Our finest road bikes are offered as custom bikes with many different groupsets to choose from. Multiple options are available to really customize your new Sensa.

LIMITED

Want to stand out from the crowd? We offer the Giulia GF in special “Limited” color schemes. This color scheme is painted in limited numbers only, to make your already unique custom bike extra special.





Giulia GF

Size	A	B2	C	D	E	F	G	H	Reach	Stack
50cm	456mm	523mm	115mm	979mm	375mm	45mm	74,5°	71,7°	378mm	523mm
53cm	492mm	543mm	143mm	985mm	375mm	45mm	74,0°	72,7°	384mm	553mm
55cm	517mm	559mm	167mm	997mm	375mm	45mm	73,5°	72,7°	389mm	576mm
58cm	538mm	575mm	186mm	1004mm	375mm	45mm	73,0°	73,0°	393mm	595mm
61cm	564mm	591mm	207mm	1012mm	375mm	45mm	72,7°	73,5°	399mm	617mm

Giulia GF
Brilliant Black



Photo * is with Full Ultegra 2x12 Di2 Groupset and options: Supra RFC Premium 50 Wide Full Carbon, Continental GP 5000 28 mm Full Black, Supra Combo Aero Weight * 7,4KG (frame 970g & fork 350g)

Giulia GF
Liquid Red
Limited



Photo * is with Full Ultegra 2x12 Di2 Groupset and options: Supra RFC Premium 50 Wide Full Carbon, Supra Combo Integrale - Weight * 7,5KG (frame 970g & fork 350g)

Giulia GF
Star Dust
Limited



Photo * is with Full Dura Ace 2x12 Di2 Groupset and options: Supra RFC Premium 50 Wide Full Carbon, Continental GP5000 28 mm Full Black, Supra Combo Aero - Weight * 7KG (frame 970g & fork 350g)

Giulia GF
Dark Denim
Limited



Photo * is with Full 105 2x12 Di2 Groupset and options: Supra RFC Premium SL Full Carbon, Vittoria Corsa Pro Skinwall 28 mm, Supra Combo Integrale - Weight * 7,7KG (frame 970g & fork 350g)

GIULIA EVO INTEGRALE



THE NEED FOR SPEED SENSA GIULIA EVO INTEGRALE

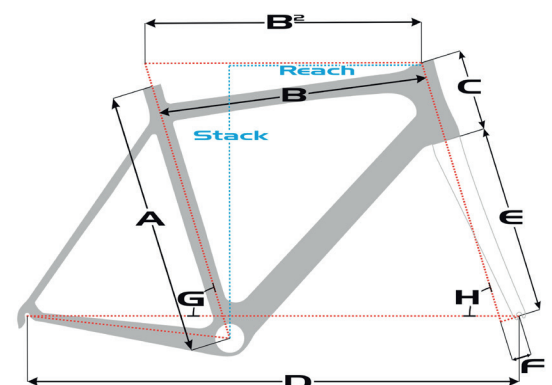
We took the Giulia Evo Disc to the next level. Bringing all the hoses internally and raising the headtube stiffness. To give you just that little advantage to be first at the finish line, or at the coffeehouse.

We designed the bike to perform optimal with 25mm tires. But it can take up to 30mm of rubber. So you can adapt the bike to ride on multiple surfaces. The rear-triangle is altered so the new 12speed groupsets have got additional clearance between chain and dropout. What has not been changed is the fast handling geometry of its predecessor and the smile it brings when you put the hammer down and enjoy the speed!

GIULIA EVO INTEGRALE, BUILT TO GO FAST.

You are unique! And your bike should reflect that. So every custom Sensa is built to order specially for you by one of our mechanics. Our finest road bikes are offered as custom bikes with many different groupsets to choose from. Multiple options are available to really customize your new Sensa.

Frame Generation 5 Full Carbon – Aero Integrable \ \ **Fork** Supra Full Carbon Monocoque AIRflow \ \ **Seatpost** Supra Race Line Carbon – Evo



Giulia Evo Integrable

Size	A	B2	C	D	E	F	G	H	Reach	Stack
50cm	467mm	523mm	112mm	976mm	375mm	45mm	74,5°	72,0°	379mm	520mm
53cm	503mm	542mm	140mm	982mm	375mm	45mm	74,0°	73,0°	384mm	550mm
55cm	522mm	559mm	161mm	994mm	375mm	45mm	73,5°	73,0°	390mm	570mm
58cm	541mm	575mm	181mm	1005mm	375mm	45mm	73,0°	73,0°	395mm	590mm
61cm	564mm	591mm	201mm	1012mm	375mm	45mm	72,7°	73,5°	401mm	610mm

**Giulia Evo
Integrale**
Matt Black & Hologram



Photo * is with Full 105 2x12 Di2 Groupset and options: Supra RFC Elite 45 Full Carbon, Continental GP 5000 28 mm Full Black, Supra Combo Integrale - Weight * 8,4KG (Frame 1180g & fork 355g)





NEXT LEVEL INTEGRATION | SUPRA COMBO AERO

For the Giulia Supremo we created the Combo Aero. Using our existing adapters and puzzle spacers it is purpose built for full internal cablerouting. The smooth shapes are more aerodynamic than its predecessor the Combo Integrale. It is also more ergonomic. The underside is a big continuous tunnel which allows cables to be guided super easy. Changing bars can be done without detaching the brakehose from the lever. To keep things tidy there is a cover which mounts easy and allows the slideable Garmin-holder or the Raceday FI hide-my-bell to be mounted.

The bend has been reshaped. Creating a dual flare, so the bar is more narrow at the hoods than at the outers and the slight outward position of the lower part gives more room for the wrist while sprinting.

The topcap can be replaced by any standard round spacer, so it's possible to keep some additional length to your steerer, to finetune your position. Finishing off with 3D grip bumps on top of the bars for additional grip the Combo AERO is ready to go.

It's offered in 4 sizes all with a nicely compact bend (75mm reach, 126mm drop).



SMOOTH SHAPES



3D GRIP BUMPS



DUAL FLARED BEND



DUAL FLARED BEND



SMOOTH SHAPES



TUNNEL + COVER

	Giulia Supremo Giulia GF Giulia Evo Int.	Giulia Supremo Giulia GF Giulia Evo Int.	Giulia Supremo Giulia GF Giulia Evo Int.	Giulia Supremo Giulia GF Giulia Evo Int.	Giulia Supremo Giulia GF Giulia Evo Int.
	FULL DURA ACE 2X12 DI2 DISC R9270	SRAM FORCE 2X12 AXS DISC	FULL ULTEGRA 2X12 DI2 DISC R8170	FULL 105 2X12 DI2 DISC R7170	FULL 105 2X12 DI2 DISC R7170
DRIVETRAIN					
Compact - 50/34	STANDARD	FC 48-35	STANDARD	STANDARD	STANDARD
Pro Compact - 52/36		NO			
Cassette 11-30	STANDARD	CS 10-33	STANDARD	NO	NO
Cassette 11-34		NO		STANDARD	STANDARD
POWERMETER					
Powercrank E - Inpeak Left-sided - NEW		NO			
Sram Powermeter Force Spindle - NEW	NO	STANDARD	NO	NO	NO
WHEELS DISC-BRAKE					
Supra RA Pro Disc	STANDARD	STANDARD	STANDARD	STANDARD	STANDARD
Supra RFC Premium 62 SPEED - Full Carbon - NEW					
Supra RFC Premium 50 WIDE - Full Carbon - NEW					
Supra RFC Premium SL - Full Carbon					
Supra RFC Elite 45 - Full Carbon - NEW					
DT Swiss AR 1600 Spline 30		NO			
DT Swiss A 1800 Spline 30		NO			
TIRES					
Vittoria Rubino Pro Folding 28mm	STANDARD	STANDARD	STANDARD	STANDARD	STANDARD
Schwalbe Pro One Super Race Transparant Brown 28mm					
Vittoria Corsa Pro Skinwall 28mm					
Continental GP 5000 28mm Transparant Brown					
Continental GP 5000 28mm Full Black					
Continental GP 5000 30mm Full Black - NEW					
Continental GP 5000 32mm Full Black - NEW - Fits GF-only					
Continental TPU innertubes					
SADDLES					
Selle Italia Model X EVO - NEW	STANDARD	STANDARD	STANDARD	STANDARD	STANDARD
Selle Italia Model X Superflow Comfort	YOUR CHOICE	YOUR CHOICE	YOUR CHOICE	YOUR CHOICE	YOUR CHOICE
Selle Italia X3 Boost Wide Open - Lady	YOUR CHOICE	YOUR CHOICE	YOUR CHOICE	YOUR CHOICE	YOUR CHOICE
San Marco Concor	YOUR CHOICE	YOUR CHOICE	YOUR CHOICE	YOUR CHOICE	YOUR CHOICE
San Marco Aspide Open	YOUR CHOICE	YOUR CHOICE	YOUR CHOICE	YOUR CHOICE	YOUR CHOICE
San Marco Shortfit Wide Open	YOUR CHOICE	YOUR CHOICE	YOUR CHOICE	YOUR CHOICE	YOUR CHOICE
COCKPIT-SET					
Supra Speed Line set	STANDARD	STANDARD	STANDARD	STANDARD	STANDARD
Slam-that-stem - Low stack adapter for regular stem					
Supra Combo Aero: 1-Piece Integrated Stem-Bar Full Carbon					
Supra Combo Integrale: 1-Piece Integrated Stem-Bar Full Carbon					
Zipp SL 70 Ergo Handlebar Full Carbon for regular stem					
Handlebar Tape (see website)	YOUR CHOICE	YOUR CHOICE	YOUR CHOICE	YOUR CHOICE	YOUR CHOICE
EXTRAS					
Slideable Garmin holder to mount under Combo					
HideMyBell Raceday4 Evo Fi Garmin holder to mount under Combo					
Supra Full Carbon Waterbottle Cage V4 - Matt - per 2 pieces					
Elite Waterbottle Cage Custom Race X - P-o-B - per 2 pieces - NEW					
Shimano SPD-SL PD-R8000					
Shimano SPD-SL PD-RS500					

Giulia Supremo Splendid Onyx Special Edition

S26CS899SUS1

POWER
meter

LIMITED



frame Generation 5 Full Carbon - EPS moulding - CFD Optimized \\ **fork** Supra full Carbon monocoque - AIRflow 2 - Tapered 1.5 \\ **group** Full Sram Force AXS 2x12 48x35 & 10-33 + Powermeter spindle \\ **seatpost** Supra Race Line Carbon Evo \\ **handlebar** Supra Combo Aero \\ **stem** Supra Combo Aero \\ **wheels** Supra RFC Premium 50 WIDE \\ **tires** Continental GP 5000 28mm Full Black \\ **saddle** Selle Italia Shortfit \\ **sizes** 50-53-55-58-61cm \\ **color** Shiny Splendid Onyx \\ **weight** 7,5KG (frame 1025g & fork 335g)

Giulia Supremo Bright White Special Edition

S26CS799SUS2

POWER
meter

LIMITED



frame Generation 5 Full Carbon - EPS moulding - CFD Optimized \\ **fork** Supra full Carbon monocoque - AIRflow 2 - Tapered 1.5 \\ **group** Full Shimano Ultegra Di2 Disc 2x12 + Powermeter Inpeak Powercrank-E Left-sided \\ **seatpost** Supra Race Line Carbon Evo \\ **handlebar** Supra Combo Aero \\ **stem** Supra Combo Aero \\ **wheels** Supra RFC Premium 50 WIDE \\ **tires** Continental GP 5000 28mm Full Black \\ **saddle** Selle Italia Shortfit \\ **sizes** 50-53-55-58-61cm \\ **color** Shiny Bright White & Hologram \\ **weight** 7,6KG (frame 1025g & fork 335g)

one specification - one special price

Giulia Supremo Project Z Prism Teal Limited

S26CS799SUS3



frame Generation 5 Full Carbon - EPS moulding - CFD Optimized \\ **fork** Supra full Carbon monocoque - AIRflow 2 - Tapered 1.5 \\ **group** Full Shimano Ultegra Di2 Disc 2x12 \\ **seatpost** Supra Race Line Carbon Evo \\ **handlebar** Supra Combo Aero \\ **stem** Supra Combo Aero \\ **wheels** Supra RFC Elite 45 \\ **tires** Vittoria Rubino Pro Folding 28mm \\ **saddle** Selle Italia Model X Evo \\ **sizes** 50-53-55-58-61cm \\ **colors** 4 options \\ **weight** 8KG (frame 1025g & fork 335g)

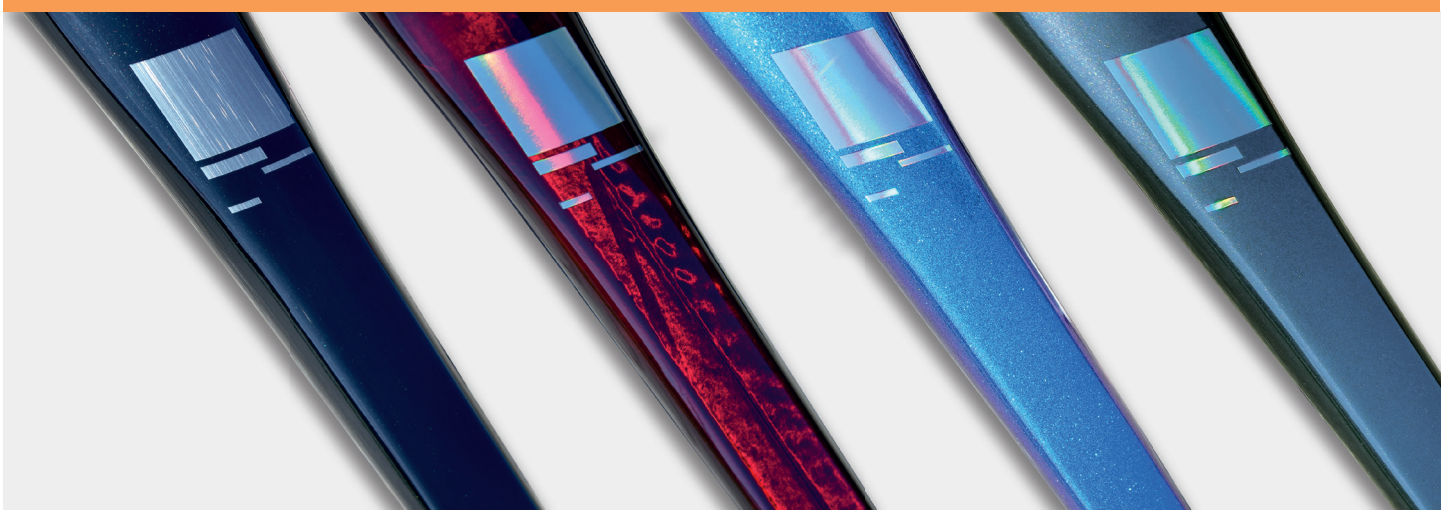
Available in the following colors (see also page 8-9)

Dark Brush

Deep Red Shade

Prism Teal

Mineral Grey





road

Giulia Evo Integrale Pro

S26R85EISB



frame Generation 5 Full Carbon - Aero Evo Disc \\ **fork** Supra full Carbon monocoque - Airflow Evo Disc - Tapered 1.5 \\ **group** Full Shimano 105 Disc 2x12 - 50x34 + 11-34 - 105 hydraulic disc brakes \\ **seatpost** Supra Race Line Carbon Evo \\ **handlebar** Supra Speed Line \\ **stem** Supra Speed Line \\ **wheels** Supra RA Pro Disc \\ **tires** Schwalbe One Performance 28mm \\ **saddle** Selle Italia Model X Superflow \\ **sizes** 50-53-55-58-61cm \\ **color** Shiny Deep Pearl Blue \\ **weight** 9.0KG (frame 1180g & fork 355g)

Giulia GF Di2 Special

S26R86GFSG



frame Generation 5 Full Carbon - EPS moulding \\ **fork** Supra full Carbon monocoque - Airflow - Tapered 1.5 \\ **group** Full Shimano 105 Di2 Disc 2x12 - 50x34 + 11-34 - 105 hydraulic disc brakes \\ **seatpost** Carbon 27.2mm \\ **handlebar** Supra Speed Line \\ **stem** Supra Speed Line \\ **wheels** Supra RA Pro Disc \\ **tires** Vittoria Rubino Pro Folding 30mm \\ **saddle** Selle Italia Shortfit \\ **sizes** 50-53-55-58-61cm \\ **color** Shiny Nightshade Teal \\ **weight** 8,3KG (frame 970g & fork 350g)

Giulia GF Pro

S26R84GFSG



frame Generation 5 Full Carbon - EPS moulding \\ **fork** Supra full Carbon monocoque - Airflow - Tapered 1.5 \\ **group** Full Shimano 105 Disc 2x12 - 50x34 + 11-34 - 105 hydraulic disc brakes \\ **seatpost** Carbon 27.2mm \\ **handlebar** Supra Speed Line \\ **stem** Supra Speed Line \\ **wheels** Supra RA Pro Disc \\ **tires** Schwalbe One Performance 28mm \\ **saddle** Selle Italia Model X Superflow \\ **sizes** 50-53-55-58-61cm \\ **color** Shiny Charcoal Grey \\ **weight** 8,4KG(frame 970g & fork 350g)

Giulia GF Comp

S26R83GFSG



frame Generation 5 Full Carbon - EPS moulding \\ **fork** Supra full Carbon monocoque - Airflow - Tapered 1.5 \\ **group** Full Shimano 105 Disc 2x12 - 50x34 + 11-34 - 105 hydraulic disc brakes \\ **seatpost** Carbon 27.2mm \\ **handlebar** Supra Comp Line \\ **stem** Supra Comp Line \\ **wheels** Supra RA Comp Disc \\ **tires** Vittoria Zaffiro Pro Folding 30mm \\ **saddle** Selle Italia Model X Superflow \\ **sizes** 50-53-55-58-61cm \\ **color** Shiny Alpine Grey \\ **weight** 9KG (frame 970g & fork 350g)

Giulia GF Tour

S26R82GFSB



frame Generation 5 Full Carbon - EPS moulding \\ **fork** Supra full Carbon monocoque - Airflow - Tapered 1.5 \\ **group** Full Shimano 105 Disc 2x12 - 50x34 + 11-34 - 105 hydraulic disc brakes \\ **seatpost** Supra Speed Line 27.2 \\ **handlebar** Supra Comp Line \\ **stem** Supra Comp Line \\ **wheels** Supra RA Comp Disc \\ **tires** Vittoria Zaffiro 32mm \\ **saddle** Supra Comp Race \\ **sizes** 50-53-55-58-61cm \\ **color** Shiny Black & Hologram \\ **weight** 9,3KG (frame 970g & fork 350g)



Romagna RS Pro

S26R78RRSG



frame Lite aluminium 6061 - 2x butted - Hydroformed - Smooth - Flat mount - E-thru 12mm - Full Internal cable routing - 1.5 bearings \\ **fork** Supra Full Carbon S4 - Flat mount - E-thru 12mm - Tapered 1.5 \\ **group** Full Shimano 105 Disc 2x12 - 50x34 + 11-34 - 105 hydraulic disc brakes \\ **seatpost** Supra Comp Line 31.6mm \\ **handlebar** Supra Comp Line \\ **stem** Supra Comp Line \\ **wheels** Supra RA Comp Disc \\ **tires** Vittoria Zaffiro Pro Folding 30mm \\ **saddle** Selle Italia Model X Superflow \\ **sizes** S51 - M55 - L58 - XL62 \\ **color** Shiny Iron Grey \\ **weight** 9.9KG

Romagna RS Tour

S26R74RRSB



frame Lite aluminium 6061 - 2x butted - Hydroformed - Smooth - Flat mount - E-thru 12mm - Full Internal cable routing - 1.5 bearings \\ **fork** Supra Full Carbon S4 - Flat mount - E-thru 12mm - Tapered 1.5 \\ **group** Full Shimano Cues Disc 2x10 - 50x39 + 11-34 - hydraulic disc brakes \\ **seatpost** Supra Comp Line 31.6mm \\ **handlebar** Supra Comp Line \\ **stem** Supra Comp Line \\ **wheels** Supra RA Comp Disc \\ **tires** Vittoria Zaffiro 32mm \\ **saddle** Selle Italia Model X Superflow \\ **sizes** S51 - M55 - L58 - XL62 \\ **color** Shiny Liquid Blue \\ **weight** 10.6KG

Romagna RS Pro Lady Special

S26R78RLSG



frame Lite aluminium 6061 - 2x butted - Hydroformed - Smooth - Flat mount - E-thru 12mm - Full Internal cable routing - 1.5 bearings \\ **fork** Supra Full Carbon S4 - Flat mount - E-thru 12mm - Tapered 1.5 \\ **group** Full Shimano 105 Disc 2x12 - 50x34 + 11-34 - 105 hydraulic disc brakes \\ **seatpost** Supra Comp Line 31.6mm \\ **handlebar** Supra Comp Line \\ **stem** Supra Comp Line \\ **wheels** Supra RA Comp Disc \\ **tires** Vittoria Zaffiro Pro Folding 30mm \\ **saddle** Selle Italia Model X Superflow Comfort \\ **sizes** XS48 - S51 - M55 - L58 \\ **color** Shiny Iron Grey \\ **weight** 9.9KG

Romagna RS Tour Lady Special

S26R74RLSB



frame Lite aluminium 6061 - 2x butted - Hydroformed - Smooth - Flat mount - E-thru 12mm - Full Internal cable routing - 1.5 bearings \\ **fork** Supra Full Carbon S4 - Flat mount - E-thru 12mm - Tapered 1.5 \\ **group** Full Shimano Cues Disc 2x10 - 50x39 + 11-34 - hydraulic disc brakes \\ **seatpost** Supra Comp Line 31.6mm \\ **handlebar** Supra Comp Line \\ **stem** Supra Comp Line \\ **wheels** Supra RA Comp Disc \\ **tires** Vittoria Zaffiro 32mm \\ **saddle** Selle Italia Model X Superflow Comfort \\ **sizes** XS48 - S51 - M55 - L58 \\ **color** Shiny Liquid Blue \\ **weight** 10.6KG

FROM GRAVEL TO GLORY – GIULIA GRAVEL

Riding into the unknown. That's what the Giulia Gravel was designed for. With this bike, you won't shy away from any road or path. The Giulia Gravel has road and cyclocross in it's DNA but with a geometry that's more comfortable.

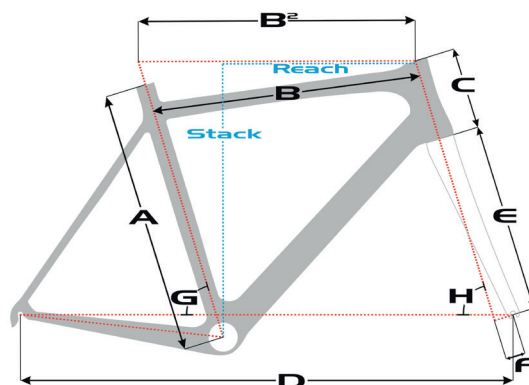
FRAME

The Giulia Gravel was designed based on the knowledge we gained during the development of our racing bikes. The low-set seatstays provides some comfort on rougher paths. To be able to take bags or a pump with you, extra mounting points have been mounted on the down and top tubes. The design has created enough space for 47mm tires. On rainy days, you can mount a mudguard on the designated mounting points.

FULLY INTERNAL CABLE ROUTING

This year, the Giulia Gravel has been upgraded with fully integrated cable routing, resulting in a cleaner look and a faster bike!

Frame Generation 5 Full Carbon - EPS moulding - Full Internal - UDH \\ **Fork** Fork Supra full Carbon XP - Flat mount - E-thru 12mm - Tapered 1.5 \\ **Tire Clearance** 47 mm





Giulia Gravel

Size	A	B2	C	D	E	F	G	H	Reach	Stack
S	443mm	547mm	121mm	1019mm	395mm	50mm	73,5°	71,2°	386mm	546mm
M	496mm	557mm	139mm	1027mm	395mm	50mm	73,5°	71,5°	390mm	564mm
L	538mm	573mm	160mm	1041mm	395mm	50mm	73,5°	71,8°	401mm	584mm
XL	568mm	589mm	180mm	1055mm	395mm	50mm	73,5°	72,0°	411mm	604mm

Giulia Gravel XP Elite Di2 + Carbon Wheels

S26G89GGST



frame Generation 5 Full Carbon - EPS moulding - Full Internal - UDH \\ **fork** Supra full Carbon XP - Flat mount - E-thru 12mm - Tapered 1.5 \\ **group** Full Shimano GRX 2x12 Di2 - RX-825 Front and Rear derailleurs - FC-RX820 48x31 + CS 11-36 - Hydraulic disc brakes \\ **seatpost** Carbon 27.2mm \\ **handlebar** Supra Combo Aero \\ **stem** Supra Combo Aero \\ **wheels** Supra GFC Elite TLR Carbon \\ **tires** Vittoria Terreno T50 Mixed 45mm \\ **saddle** Selle Italia Model X Evo \\ **sizes** S-M-L-XL \\ **color** Shiny Prism Teal & Metallic White \\ **weight** 8.7KG

Giulia Gravel XP Elite Di2

S26G88GGST



frame Generation 5 Full Carbon - EPS moulding - Full Internal - UDH \\ **fork** Supra full Carbon XP - Flat mount - E-thru 12mm - Tapered 1.5 \\ **group** Full Shimano GRX 2x12 Di2 - RX-825 Front and Rear derailleurs - FC-RX820 48x31 + CS 11-36 - Hydraulic disc brakes \\ **seatpost** Carbon 27.2mm \\ **handlebar** Supra Combo Aero \\ **stem** Supra Combo Aero \\ **wheels** Supra GA Elite TLR \\ **tires** Vittoria Terreno T50 Mixed 45mm \\ **saddle** Selle Italia Model X Evo \\ **sizes** S-M-L-XL \\ **color** Shiny Prism Teal & Metallic White \\ **weight** 9.0KG

Giulia Gravel XP Elite AXS + Carbon Wheels

S26G87GGST



frame Generation 5 Full Carbon - EPS moulding - Full Internal - UDH \\ **fork** Supra full Carbon XP - Flat mount - E-thru 12mm - Tapered 1.5 \\ **group** Full Sram Rival XPLR AXS 1x13 - 40T x 10-46 \\ **seatpost** Carbon 27.2mm \\ **handlebar** Supra Combo Aero \\ **stem** Supra Combo Aero \\ **wheels** Supra GFC Elite TLR Carbon \\ **tires** Vittoria Terreno T50 Mixed 45mm \\ **saddle** Selle Italia Model X Evo \\ **sizes** S-M-L-XL \\ **color** Shiny Prism Teal & Metallic White \\ **weight** 8.6KG

Giulia Gravel XP Elite AXS

S26G86GGST



frame Generation 5 Full Carbon - EPS moulding - Full Internal - UDH \\ **fork** Supra full Carbon XP - Flat mount - E-thru 12mm - Tapered 1.5 \\ **group** Full Sram Rival XPLR AXS 1x13 - 40T x 10-46 \\ **seatpost** Carbon 27.2mm \\ **handlebar** Supra Combo Aero \\ **stem** Supra Combo Aero \\ **wheels** Supra GA Elite TLR \\ **tires** Vittoria Terreno T50 Mixed 45mm \\ **saddle** Selle Italia Model X Evo \\ **sizes** S-M-L-XL \\ **color** Shiny Prism Teal & Metallic White \\ **weight** 8.9KG

Giulia Gravel XP Elite + Carbon Wheels

S26G85GGSB



frame Generation 5 Full Carbon - EPS moulding - Full Internal - UDH \\ **fork** Supra full Carbon XP - Flat mount - E-thru 12mm - Tapered 1.5 \\ **group** Shimano GRX 2x12 - RX-820 Front and Rear derailleurs - FC-RX610 46x30 + CS 11-34 - Hydraulic disc brakes \\ **seatpost** Carbon 27.2mm \\ **handlebar** Supra X Line Flare \\ **stem** Supra X Line \\ **wheels** Supra GFC Elite TLR Carbon \\ **tires** Schwalbe G-One Allround TLE 45mm \\ **saddle** Selle Italia Model X Evo \\ **sizes** S-M-L-XL \\ **color** Shiny Flat Grey & Forest Green & Black \\ **weight** 9.0KG

Giulia Gravel XP Elite

S26G84GGSB



frame Generation 5 Full Carbon - EPS moulding - Full Internal - UDH \\ **fork** Supra full Carbon XP - Flat mount - E-thru 12mm - Tapered 1.5 \\ **group** Shimano GRX 2x12 - RX-820 Front and Rear derailleurs - FC-RX610 46x30 + CS 11-34 - Hydraulic disc brakes \\ **seatpost** Carbon 27.2mm \\ **handlebar** Supra X Line Flare \\ **stem** Supra X Line \\ **wheels** Supra GA Elite TLR \\ **tires** Schwalbe G-One Allround TLE 45mm \\ **saddle** Selle Italia Model X Evo \\ **sizes** S-M-L-XL \\ **color** Shiny Flat Grey & Forest Green & Black \\ **weight** 9.2KG

Giulia Gravel XP Pro

S26G83GGSB



frame Generation 5 Full Carbon - EPS moulding - Full Internal - UDH \\ **fork** Supra full Carbon XP - Flat mount - E-thru 12mm - Tapered 1.5 \\ **group** Shimano GRX 2x12 - RX-820 Front and Rear derailleurs - FC-RX610 46x30 + CS 11-34 - Hydraulic disc brakes \\ **seatpost** Supra Pro Line 27.2mm \\ **handlebar** Supra X Line Flare \\ **stem** Supra X Line \\ **wheels** Supra GA Pro TLR \\ **tires** Schwalbe G-One Allround TLE 45mm \\ **saddle** Selle Italia Model X Evo \\ **sizes** S-M-L-XL \\ **color** Shiny Black + Bronze Hologram \\ **weight** 9.6KG



Romagna Gravel XP GRX 2x12

S26G79RXSB



frame Lite aluminium 6061 - 2x butted - Hydroformed - Smooth - Flat mount - E-thru 12mm - Full Internal cable routing - 1.5 bearings \\ **fork** Supra full Carbon XP - Flat mount - E-thru 12mm - Tapered 1.5 \\ **group** Shimano GRX 2x12 - RX-820 Front and Rear derailleur - FC-RX610 46x30 + CS 11-34 - Hydraulic disc brakes \\ **seatpost** Supra Comp Line 31.6mm \\ **handlebar** Supra Comp Line Gravel - Flared \\ **stem** Supra Comp Line \\ **wheels** Supra GA Pro TLR \\ **tires** Vittoria Terreno Dry Folding TLR 47mm \\ **saddle** Selle Italia Model X Evo \\ **sizes** S51 - M55 - L58 - XL61 \\ **color** Shiny Bice Blue-on-Black & Titan Flash \\ **weight** 10.3KG

Romagna Gravel XP Tour

S26G75RXSR



frame Lite aluminium 6061 - 2x butted - Hydroformed - Smooth - Flat mount - E-thru 12mm - Full Internal cable routing - 1.5 bearings \\ **fork** Supra full Carbon XP - Flat mount - E-thru 12mm - Tapered 1.5 \\ **group** Full Shimano Cues Disc 1x11 - 42T x 11-50 - hydraulic disc brakes \\ **seatpost** Supra Comp Line 31.6mm \\ **handlebar** Supra Comp Line Gravel - Flared \\ **stem** Supra Comp Line \\ **wheels** Supra RA Comp Disc \\ **tires** Schwalbe G-One Comp 45mm \\ **saddle** Supra Comp XC \\ **sizes** S51 - M55 - L58 - XL61 \\ **color** Shiny Deep Red-Gold Velvet \\ **weight** 11.2KG



mountainbike

NEW

Fiori XCR Elite Di2 + Carbon Wheels

S26M59FXSR



frame Generation 5 Full Carbon - Boost-148 - Thru-Axle - Tapered 1.5 - UDH \\ **fork** RockShox SID 35mm - DebonAir - 100mm travel - Boost - Oneloc - Tapered 1.5 \\ **group** Shimano Deore XT Di2 1x12 - RD&SW-M8250 - FC Deore 32T CL55 170mm x 10-51 - Deore hydraulic disc brakes \\ **seatpost** Supra X Line 31.6mm \\ **handlebar** Ursus Magnus HX.01 carbon cockpit \\ **stem** Ursus Magnus HX.01 carbon cockpit \\ **wheels** FFWD Outlaw Carbon \\ **tires** Schwalbe Rick XC Pro - TLR - 2.4 + Aerothan Tubes \\ **saddle** Selle Italia Model X Evo \\ **sizes** 29er | S-M-L-XL \\ **color** Shiny Deep Red Shade \\ **weight** 10.3KG

NEW

Fiori XCR Elite Di2

S26M58FXSR



frame Generation 5 Full Carbon - Boost-148 - Thru-Axle - Tapered 1.5 - UDH \\ **fork** RockShox SID 35mm - DebonAir - 100mm travel - Boost - Oneloc - Tapered 1.5 \\ **group** Shimano Deore XT Di2 1x12 - RD&SW-M8250 - FC Deore 32T CL55 170mm x 10-51 - Deore hydraulic disc brakes \\ **seatpost** Supra X Line 31.6mm \\ **handlebar** Ursus Magnus HX.01 carbon cockpit \\ **stem** Ursus Magnus HX.01 carbon cockpit \\ **wheels** Leeze AC i28 \\ **tires** Schwalbe Rick XC Pro - TLR - 2.4 + Aerothan Tubes \\ **saddle** Selle Italia Model X Evo \\ **sizes** 29er | S-M-L-XL \\ **color** Shiny Deep Red Shade \\ **weight** 10.6KG

Fiori Evo Elite

S26M57FEMG



frame Generation 5 Full Carbon - Boost-148 - Thru-Axle - Dropper ready - Tapered 1.5 \\ **fork** RockShox SID SL - DebonAir - 100mm travel - Boost - Oneloc - Tapered 1.5 \\ **group** Shimano XT 1x12 - 34T + 10-51 - CS & CN M7100 - XT hydraulic disc brakes \\ **seatpost** Supra X Line 30.9mm \\ **handlebar** Supra X Line - 720mm + 5mm rise \\ **stem** Supra X Line \\ **wheels** Supra MA Elite 23-TLR - Tubeless ready \\ **tires** Vittoria Barzo XC-Trail folding TLR 2.25 \\ **saddle** Selle Italia Model X Superflow \\ **sizes** 29er | 17-19-21" \\ **color** Stone Titan \\ **weight** 10.6KG

NEW

Fiori XCR Race

S26M56FXSB



frame Generation 5 Full Carbon - Boost-148 - Thru-Axle - Tapered 1.5 - UDH \\ **fork** RockShox Judy Silver TK - Air - 100mm travel - Boost - Poploc - Tapered 1.5 \\ **group** Shimano Deore 1x12 - XT Rear derailleur - FC-MT512 32T CL55 170mm x 10-51 - Shimano hydraulic disc brakes \\ **seatpost** Supra X Line 31.6mm \\ **handlebar** Supra X Line - 720mm + 5mm rise \\ **stem** Supra X Line \\ **wheels** Supra MA Pro \\ **tires** Schwalbe Smart Sam Perf. 2.35 \\ **saddle** Selle Italia Model X Evo \\ **sizes** 29er | S-M-L-XL \\ **color** Shiny Black & Hologram \\ **weight** 11.4KG

Merano XC Pro

S26M46MXSB



frame Ultralite aluminium 6066 - 3x butted - Hydroformed - Smooth - Boost-148 - Thru-Axle - Tapered 1.5 \\ **fork** RockShox Recon RL - Air - 100mm travel - Boost - Oneloc - Tapered 1.5 \\ **group** Shimano XT 1x12 - FC-MT510 34T + 10-51 - CS & CN M7100 - MT410 hydraulic disc brakes \\ **seatpost** Supra X Line 31.6mm \\ **handlebar** Supra X Line - 720mm + 5mm rise \\ **stem** Supra X Line \\ **wheels** Supra MA Pro \\ **tires** Schwalbe Racing Ralph Performance 2.25 \\ **saddle** Selle Italia Model X Superflow \\ **sizes** 29er | 17-19-21" \\ **color** Shiny Midnight Blue \\ **weight** 12.5KG

Merano XC Race

S26M44MXSG



frame Ultralite aluminium 6066 - 3x butted - Hydroformed - Smooth - Boost-148 - Thru-Axle - Tapered 1.5 \\ **fork** RockShox Judy Silver TK - Air - 100mm travel - Boost - Poploc - Tapered 1.5 \\ **group** Shimano XT 1x12 - FC-MT511 32T + 10-51 - CS & CN M6100 - Shimano hydraulic disc brakes \\ **seatpost** Supra X Line 31.6mm \\ **handlebar** Supra X Line - 720mm + 5mm rise \\ **stem** Supra X Line \\ **wheels** Supra MA Pro \\ **tires** Schwalbe Smart Sam Bronze 2.35 \\ **saddle** Selle Italia Model X Superflow \\ **sizes** 29er | 17-19-21" \\ **color** Shiny Flat Grey \\ **weight** 13.1KG

Livigno XC XT-Edition

S26M38LXSB



frame Lite aluminium 6061 - 2x butted - Hydroformed - Boost - Internal cable routing - Tapered 1.5 \\ **fork** SR Suntour XCR - Air - 100mm travel - Remote LockOut - Stealth \\ **group** Shimano Deore 1x12 - FC-MT511 32T + 10-51 - XT rear derailleurs - Shimano hydraulic disc brakes \\ **seatpost** Supra Comp Line 31.6mm \\ **handlebar** Supra Comp Line \\ **stem** Supra Comp Line \\ **wheels** Supra MA Comp \\ **tires** Schwalbe Smart Sam Bronze 2.35 \\ **saddle** Supra Comp XC \\ **sizes** 29er | 17-19-21" \\ **color** Shiny Black \\ **weight** 13.5KG

Livigno Evo C11

S26M35LEMB



frame Lite aluminium 6061 - 2x butted - Hydroformed - Boost - Internal cable routing - Tapered 1.5 \\ **fork** SR Suntour X1-XCR - Coil - 100mm travel - Remote LockOut \\ **group** Shimano Cues 1x11 - 32T + 11-50 - Shimano hydraulic disc brakes \\ **seatpost** Supra Comp Line 31.6mm \\ **handlebar** Supra Comp Line \\ **stem** Supra Comp Line \\ **wheels** Supra MA Comp \\ **tires** Vittoria Barzo 2.25 \\ **saddle** Supra Comp XC \\ **sizes** 29er | 15-17-19-21" \\ **color** Matt Black + Dark Brush \\ **weight** 13.7KG



trekking

Cintura Evo Premium S26T19CESG

frame	Lite aluminium 6061 - Triple Butted - Hydroformed - Smooth finish - 1.5 bearings
fork	Supra Evo - Full carbon - Tapered 1.5
group	Shimano Alfine-8 - Gates Belt CDX, 22T CDC, 50T CDN - Shimano hydraulic disc brakes
seatpost	Supra Comp Line 27.2
handlebar	Uno Alloy
stem	Alloy - Adjustable
lock	AXA Defender RL
lights	Shimano hub dynamo - AXA Nxt60 + AXA Juno
wheels	Supra TA Pro + Shimano hubs
tires	Schwalbe Green Marathon 47-622
saddle	Selle Royal Essenza
sizes	Lady 50-55cm Gent 55-61cm
color	Shiny Flat Grey +
weight	3K Carbon 15.5KG



Cintura Evo Elite S26T18CESS

frame	Lite aluminium 6061 - Triple Butted - Hydroformed - Smooth finish - 1.5 bearings
fork	Supra Evo - Alloy - Tapered 1.5
group	Shimano Alfine-8 - Gates Belt CDN, 22T CDC, 50T CDN - Shimano hydraulic disc brakes
seatpost	Supra Comp Line 27.2
handlebar	Uno Alloy
stem	Alloy - Adjustable
lock	AXA Defender RL
lights	Shimano hub dynamo - AXA Nxt60 + AXA Juno
wheels	Supra TA Pro + Shimano hubs
tires	Schwalbe Road Cruiser 47-622
saddle	Selle Royal Essenza
sizes	Lady 50-55cm Gent 55-61cm
color	Shiny Speedy Silver & Metallic Black
weight	15.9KG



Cintura Limited S26T17CLMB

frame	Lite aluminium 6061 - 2x butted - Hydroformed - Smooth finish - Tapered 1.5
fork	Supra Superlite Alloy Disc - Tapered 1.5
group	Shimano Alfine-8 - Gates Belt CDN, 22T CDC, 50T CDN - Shimano hydraulic disc brakes
seatpost	Supra Comp Line 27.2
handlebar	Uno Alloy
stem	Uno Alloy - Adjustable
lock	AXA Defender RL
lights	Shimano hub dynamo - AXA BlueLine30 + AXA Juno Steady
wheels	Ryde DP19 + Shimano hubs
tires	Schwalbe Road Cruiser 37-622
saddle	Selle Royal Freeway
sizes	Lady 50-55cm Gent 55-61cm
color	Matt Black + Dark Brush
weight	14.9KG



Travel Lite Evo S26T16TLSG

frame	Lite aluminium 6061 - Triple Butted - Hydroformed - Smooth finish - 1.5 bearings
fork	Supra Evo - Alloy - Tapered 1.5
group	Shimano Cues 2x10 - LinkGlide - Shimano hydraulic disc brakes
seatpost	Supra Comp Line 27.2
handlebar	Supra Comp Line
stem	Alloy - Adjustable
lights	Shimano hub dynamo - AXA Nxt60 + AXA Juno
wheels	Supra TA Pro + Shimano hubs
tires	Schwalbe Green Marathon 47-622
saddle	Selle Royal Essenza
sizes	Lady 50-55cm Gent 55-61cm
color	Shiny Green-like Grey
weight	15.9KG



Travel Lite Disc S26T14TLMG

frame	Ultralite aluminium 6066 - 3x butted - Hydroformed - Smooth finish - Tapered 1.5
fork	Supra Superlite Alloy Disc - Tapered 1.5
group	Shimano Cues 2x10 - LinkGlide - Shimano hydraulic disc brakes
seatpost	Supra Comp Line 27.2
handlebar	Supra Comp Line
stem	Satori UP3 - Adjustable
lights	Shimano hub dynamo - AXA Blueline30 + AXA Juno
wheels	Ryde DP19 + Shimano hubs
tires	Schwalbe Energizer Active Plus 40-622
saddle	Selle Royal Essenza
sizes	Lady 52-57cm Gent 56-61cm
color	Shiny-on-Matt Graphite
weight	14.3KG



Superlite Evo S26T15SLSB

frame	Lite aluminium 6061 - Triple Butted - Hydroformed - Smooth finish - 1.5 bearings
fork	Supra Evo - Full carbon - Tapered 1.5
group	Shimano Cues 2x10 - LinkGlide - Shimano hydraulic disc brakes
seatpost	Supra Comp Line 27.2
handlebar	Uno Alloy
stem	Alloy - Adjustable
lock	AXA Defender RL
lights	AXA NOX Sport + AXA Juno
wheels	Supra TA Pro + Shimano hubs
tires	Schwalbe Road Cruiser 47-622
saddle	Selle Royal Essenza
sizes	Lady 50-55cm Gent 55-61cm
color	Shiny Flat Lead Blue
weight	+ 3K Carbon 15.4KG



Superlite Disc S26T13SLSG

frame	Ultralite aluminium 6066 - 3x butted - Hydroformed - Smooth finish - Tapered 1.5
fork	Supra Full Carbon SL Disc - Tapered 1.5
group	Shimano Cues 2x9 - LinkGlide - Shimano hydraulic disc brakes
seatpost	Supra Base Line
handlebar	Satori Noirette
stem	Satori UP3 - Adjustable
lock	AXA Defender RL
lights	AXA NOX Sport + AXA Juno
wheels	Ryde DP19 + Shimano hubs
tires	Schwalbe Road Cruiser 37-622
saddle	Selle Royal Nuvola
sizes	Lady 51-56cm Gent 56-61cm
color	Shiny Hazy Grey
weight	13.7KG



SENSA



e-bike

Cintura Power Premium 630 S26E08CPSG

frame	Lite aluminium 6061 - In-tube battery - Tapered 1.5
fork	SR Suntour NCX32 Lock-out - Stealth
group	Shimano Alfine-8 - Shimano hydraulic disc brakes - Gates CDX Belt + CDC drive
seatpost	Supra Comp Line 27.2
handlebar	Supra Comp Line 68cm + 15mm rise
stem	Satori UP2+ Adjustable
lock	Axa Block XXL
lights	Trelock Veo 50 lux + AXA Juno - E-bike powered
wheels	Ryde DP19 + Shimano hubs
tires	Schwalbe Super Moto 50-622
saddle	Selle Royal Vivo Ergo
sizes	Mixed 49-55cm Gent 52-58cm
color	Shiny Splendid Onyx&Grey
weight	23.2KG (excl. battery 3.5KG)

battery	Shimano STEPS BT-E8036 - 630Wh
drive unit	Shimano STEPS DU-E6100 (60Nm - 250W)
display	Shimano STEPS SC-E6100
charger	Shimano STEPS EC-E6002



SHIMANO
STEPS



Travel Power Premium 630 S26E06TPMG

frame	Lite aluminium 6061 - In-tube battery - Tapered 1.5
fork	SR Suntour NCX32 Lock-out - Stealth
group	Shimano Deore Linkglide 1x10 11-43 - Shimano hydraulic disc brakes
seatpost	Supra Comp Line 27.2
handlebar	Supra Comp Line 70cm Flat
stem	Satori UP2+ Adjustable
lock	Axa Block XXL
lights	Trelock Veo 50 lux + AXA Juno - E-bike powered
wheels	Ryde DP19 + Shimano hubs
tires	Schwalbe Energizer Plus 50-622
saddle	Selle Royal Vivo Ergo
sizes	Mixed 49-55cm Gent 52-58cm
color	Matt Mineral Grey
weight	23.8KG (excl. battery 3.5KG)

battery	Shimano STEPS BT-E8036 - 630Wh
drive unit	Shimano STEPS DU-E6100 (60Nm - 250W)
display	Shimano STEPS SC-E6100
charger	Shimano STEPS EC-E6002



**SHIMANO
STEPS**



Travel Power Premium 630 S26E06TPSG

frame	Lite aluminium 6061 - In-tube battery - Tapered 1.5
fork	SR Suntour NCX32 Lock-out - Stealth
group	Shimano Deore Linkglide 1x10 11-43 - Shimano hydraulic disc brakes
seatpost	Supra Comp Line 27.2
handlebar	Supra Comp Line 70cm Flat
stem	Satori UP2+ Adjustable
lock	Axa Block XXL
lights	Trelock Veo 50 lux + AXA Juno - E-bike powered
wheels	Ryde DP19 + Shimano hubs
tires	Schwalbe Energizer Plus 50-622
saddle	Selle Royal Vivo Ergo
sizes	Mixed 49-55cm Gent 52-58cm
color	Shiny Alpine Grey
weight	23.8KG (excl. battery 3.5KG)

battery	Shimano STEPS BT-E8036 - 630Wh
drive unit	Shimano STEPS DU-E6100 (60Nm - 250W)
display	Shimano STEPS SC-E6100
charger	Shimano STEPS EC-E6002



SHIMANO
STEPS



SUPRA



wheels

RFC Premium 62 Speed

ROAD RACING SL - FULL CARBON 62MM

RIMS FULL CARBON CLINCHER 62MM HEIGHT - 19MM INNER - 29MM OUTER - TUBELESS READY | **SPOKES** SAPIM CX-DELTA STRAIGHT PULL BLACK - 24 FRONT / 24 REAR | **NIPPLES** SAPIM BRASS SECURE LOCK | **HUBS** - FRONT; SUPRA PREMIUM CENTER-LOCK 12X100, REAR; SUPRA PREMIUM 36T STAR RATCHET - CENTRE-LOCK 12X142 - SHIMANO 8-9-10-11-12SP (SRAM XDR BODY AVAILABLE) | **WEIGHT** - FRONT 750 / REAR 875



RFC Premium 50 Wide

ROAD RACING SL - FULL CARBON 50MM

RIMS FULL CARBON CLINCHER 50MM HEIGHT - 22MM INNER - 32MM OUTER - TUBELESS READY | **SPOKES** SAPIM CX-DELTA STRAIGHT PULL BLACK - 24 FRONT / 24 REAR | **NIPPLES** SAPIM BRASS SECURE LOCK | **HUBS** FRONT; SUPRA PREMIUM CENTER-LOCK 12X100, REAR; SUPRA PREMIUM 36T STAR RATCHET - CENTRE-LOCK 12X142 - SHIMANO 8-9-10-11-12SP (SRAM XDR BODY AVAILABLE) | **WEIGHT** FRONT 650 / REAR 775



RFC Premium SL

ROAD RACING SL - FULL CARBON 35MM

RIMS FULL CARBON CLINCHER 35MM HEIGHT - 19MM INNER - 28MM OUTER - TUBELESS READY | **SPOKES** SAPIM CX-DELTA STRAIGHT PULL BLACK - 24 FRONT / 24 REAR | **NIPPLES** SAPIM BRASS SECURE LOCK | **HUBS** FRONT; SUPRA C526V1 CENTER-LOCK 12X100, REAR; SUPRA C527V1 - CENTRE-LOCK 12X142 - SHIMANO 8-9-10-11-12SP (SRAM XDR BODY AVAILABLE) | **WEIGHT** FRONT 625 / REAR 770



NEW!



RFC Elite 45

ROAD RACING SL - FULL CARBON 45MM

RIMS FULL CARBON CLINCHER 45MM HEIGHT - 19MM INNER - 28MM OUTER - TUBELESS READY | **SPOKES** PILLAR AERO - 24 FRONT / 28 REAR | **NIPPLES** BRASS | **HUBS** FRONT; SUPRA KC3FV1 CENTER-LOCK 12X100, REAR; SUPRA K4HCV1 - CENTRE-LOCK 12X142 - SHIMANO 8-9-10-11-12SP (SRAM XDR BODY AVAILABLE) | **WEIGHT** - FRONT 770 / REAR 925



RA Pro Disc

ROAD RACING - ALUMINIUM

RIMS LIGHTWEIGHT ALUMINIUM CLINCHER - 25MM HEIGHT - 19MM INNER - 24MM OUTER | **SPOKES** PILLAR AERO - 24 FRONT / 28 REAR | **NIPPLES** BRASS | **HUBS** FRONT; SUPRA KC3FV1 CENTER-LOCK 12X100, REAR; SUPRA K4HCV1 - CENTRE-LOCK 12X142 - SHIMANO 8-9-10-11-12SP (SRAM XDR BODY AVAILABLE) | **WEIGHT** FRONT 840 / REAR 995



RA Comp Disc

ROAD RACING - ALUMINIUM

RIMS LIGHTWEIGHT ALUMINIUM CLINCHER - 25MM HEIGHT - 19MM INNER - 24MM OUTER | **SPOKES** SAPIM 28 FRONT / 28 REAR | **NIPPLES** BRASS | **HUBS** FRONT; SHIMANO TC500 CENTRE-LOCK 12X100, REAR; SHIMANO TC500 CENTRE-LOCK 12X142 - 8-9-10-11-12SP | **WEIGHT** FRONT 910 / REAR 1090

GFC Elite TLR

GRAVEL RACING SL - FULL CARBON

RIMS FULL CARBON - HOOKLESS - 40MM HEIGHT - 25MM INNER - 30MM OUTER - TUBELESS READY | **SPOKES** PILLAR AERO - 24 FRONT / 28 REAR | **NIPPLES** BRASS | **HUBS** FRONT; SUPRA KC3FV1 CENTER-LOCK 12X100, REAR; SUPRA K4HCV1 - CENTRE-LOCK 12X142 - SHIMANO 8-9-10-11-12SP (SRAM XDR BODY AVAILABLE) | **WEIGHT** - FRONT 745 / REAR 915



GA Elite TLR

GRAVEL RACING - ALUMINIUM

RIMS LIGHTWEIGHT ALUMINIUM CLINCHER - 24MM HEIGHT - 23MM INNER - 27MM OUTER - TUBELESS READY | **SPOKES** PILLAR AERO - 24 FRONT / 28 REAR | **NIPPLES** BRASS | **HUBS** FRONT; SUPRA KC3FV1 CENTER-LOCK 12X100, REAR; SUPRA K4HCV1 - CENTRE-LOCK 12X142 - SHIMANO 8-9-10-11-12SP (SRAM XDR BODY AVAILABLE) | **WEIGHT** FRONT 860 / REAR 1025



GA Pro TLR

GRAVEL RACING - ALUMINIUM

RIMS LIGHTWEIGHT ALUMINIUM CLINCHER - 24MM HEIGHT - 23MM INNER - 27MM OUTER - TUBELESS READY | **SPOKES** SAPIM 28 FRONT / 28 REAR | **NIPPLES** BRASS | **HUBS** SHIMANO TC500 CENTRE-LOCK 12X100, REAR; SHIMANO TC500 CENTRE-LOCK 12X142 - 8-9-10-11-12SP | **WEIGHT** FRONT 890 / REAR 1070



NEW!



MA Pro

MTB CROSSCOUNTRY - ALUMINIUM

RIMS 29ER LIGHTWEIGHT ALUMINIUM CLINCHER - 21MM INNER WIDTH | **SPOKES** SAPIM 32 FRONT / 32 REAR | **NIPPLES** BRASS | **HUBS** FRONT; SHIMANO TC500 CENTRE-LOCK 15X110 BOOST, REAR; SHIMANO TC500 CENTRE-LOCK 12X148 BOOST - MICROSPINE 12SP | **WEIGHT** FRONT 970 / REAR 1160



MA COMP

MTB CROSSCOUNTRY - ALUMINIUM

MA COMP 500

RIMS 29ER LIGHTWEIGHT ALUMINIUM CLINCHER - 21MM INNER WIDTH | **SPOKES** SAPIM 32 FRONT / 32 REAR | **NIPPLES** BRASS | **HUBS** FRONT; SHIMANO MT200 QUICK RELEASE 9X100, REAR; SHIMANO MT401 QUICK RELEASE 9X141 BOOST - MICROSPINE 12SP

MA COMP 200

RIMS 29ER LIGHTWEIGHT ALUMINIUM CLINCHER - 21MM INNER WIDTH | **SPOKES** SAPIM 32 FRONT / 32 REAR | **NIPPLES** BRASS | **HUBS** FRONT; SHIMANO MT200 QUICK RELEASE 9X100, REAR; SHIMANO MT200 QUICK RELEASE 9X141 BOOST - 9-10SP





CS26SSC3
Sensa Bioracer
Jersey Icon Luxe -
Off white



CS26SSC2
Sensa Bioracer
Jersey Icon Luxe -
Fade-to-Purple



CS26BSBB
Bioracer
BIBshort
Epic



CS26SSC1
Sensa Bioracer
Jersey Icon Luxe -
Fade-to-Grey

SENSA

Disclaimer No rights can be claimed from the information in this brochure. Although all is done to make the information as complete and correct as possible, no rights can be derived from the information presented in this brochure. Weights are based on the presented models without pedals and can deviate. The frame sizes are measured center-top. See our website for full information on the geometries. Prices and specifications can be changed without prior notice and can deviate per country.

Intersens Bikes & Parts BV
Bedrijvenpark Twente 170
NL-7602 KE Almelo
The Netherlands

info@sensabikes.com
www.sensabikes.com
facebook.com/sensabikesnl
instagram.com/sensabikesnl